



**CITY LIFT**  
Performance in Motion

**35**  
YEARS  
OF EXCELLENCE



# MID-HIGH RISE SOLUTIONS



**CITY LIFT**  
Performance in Motion

**ELITE**





## CITY LIFT SMART MOVE

Founded in 1985, City Lift is one of the most trusted names in tech-enabled elevator systems in India. Backed by a proven track record in Designing, Outsourcing, Marketing & Servicing internationally competitive vertical transportation products, the company has bagged several prestigious projects from reputed builders, infrastructure giants and government institutions. City Lift has exceptional stronghold in technology coupled with strategic alliances with global elevator giants to design and deliver customised elevator systems, irrespective of size and scale.

City Lift's single window advantage clearly makes it a partner of choice when it comes to efficient new-age, elevators, escalators and automated car parking systems. With over 4000 elevators successfully installed and serviced City Lift is now gearing up for rapid expansion.

**35** YEAR  
OF EXPERIENCE

**400+**  
CLIENTS

**24/7**  
CUSTOMER  
SERVICE

**4000+**  
ELEVATORS  
INSTALLED

**10+**  
LOCATION  
(PAN INDIA)





## HIGH-SPEED PHILOSOPHY

City life and urban living is becoming the trend of the 21st century. While working and living in skyscrapers are becoming part of our daily life. City Lift's high-speed elevator is designed based on time-saving, traffic management and safety just to increase efficiency of our life.



### MISSION

“ To create and sustain customer satisfaction through innovative products & prompt services at all times; and provide timely, effective & competitive response to customer needs & expectations. ”



### VISION

“ To become the most trusted and reputed elevator company in India. ”

# Small Machine Room Passenger Elevator

## Save space, save construction cost

Compared with normal machine room size, small machine room could save over 50%, which is easy for construction layout and increases the utilization rate of construction area.

The machine room height is only 2800mm, Reduced more than 20% height than normal machine room, and Saves the building cost.



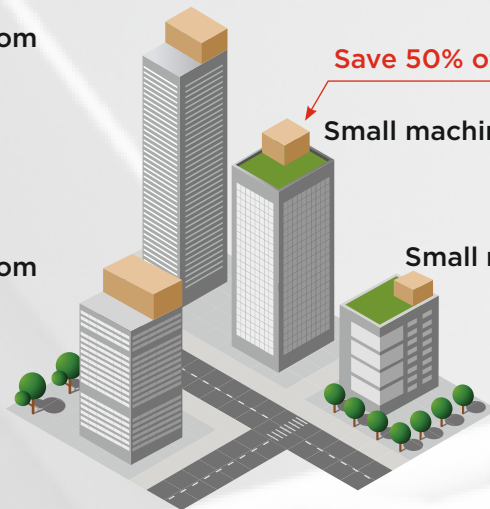
Normal machine room

Save 50% of the civil area

Small machine room

Normal machine room

Small machine room



# MRL Passenger Elevator

## Optimize design, Create space

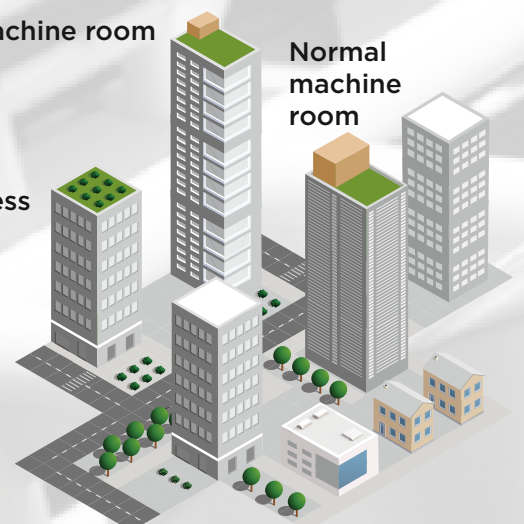
Machine room components fixed inside the shaft, save the building space, decrease the building cost

Cabin sound insulation technology, quiet and comfortable, double cabin, effectively reduce MRL elevator operation noise, Make a more quiet and comfortable environment

Normal machine room

Normal machine room

Machine roomless





# HIGH-SPEED ELEVATOR FEATURES

## SAFETY

**Pioneer & Leader in elevator field, giving you comprehensive protection**

### **VVVF Door Operator Control System**

Using permanent magnet and VVVF synchronous inverter control system, operation speed of opening and closing door is adjustable, operating safely & comfortably, with low noise and high reliability.

### **Infrared Light Curtain System**

Light curtain protection is formed at the entrance of elevator, which can inspect human or objects going in or out of elevator anytime so that accidents can be avoided. Passenger's safety and property can be protected efficiently.

## ENVIRONMENT-FRIENDLY

**Green life is a responsibility**

### **Permanent magnet synchronous motor technology**

City Lift elevators use rare-earth material, outer rotor structure, permanent magnet synchronous motor drive, combining with coaxial driving technology, digital inverter technology and computer group control to make system more efficient & reliable. Compared with same capacity geared motor elevator, it can save energy by 40%.

### **Energy Regeneration Technology**

Adopting the high speed DSP CPU and the most advanced SVPWM modulation technology, we can restore three phase output volt; Adopting phase sequence automatic identifying technology and LC filter technology, harmonic and EMI can be efficiently inhibited to ensure regenerating clean energy; The effects of energy saving is remarkable, with 20-50% fractional energy saving and 97.5% regeneration energy recycling efficiency.

## INTELLIGENCE

**Science creates quality**

### **Elevator controller**

Adopting 32 bits embedded microprocessor to achieve elevator function and motor driving control, using CAN bus communication, the system wiring is easy.

### **Remote Diagnosis System**

- ▶ Have multiple remote connection methods, such as GPRS, WIFI Internet.
- ▶ Have field diagnosis module.





# FIXTURES & FINISHES

**MACHINE ROOM (MR) & MACHINE ROOM LESS (MRL) SERIES**



# PASSENGER ELEVATOR CAR



Model : K273



<b>Car Ceiling</b>	PD057, Hairline Finished Stainless Steel, LED Down Light
<b>Car Front Wall</b>	Hairline Finished Stainless Steel
<b>Car Door</b>	Hairline Finished Stainless Steel
<b>Car Side Wall</b>	Hairline Finished Stainless Steel
<b>Car Rear Wall</b>	Hairline Finished Stainless Steel



Computer graphics may be slightly different from the physical products.



Model : FKYC-H214



<b>Rear Wall:</b>	KYDM-004 Rose gold mirror stainless steel +HS-004 Rose golden stainless steel
<b>Side Wall:</b>	KYDM-004 Rose gold mirror stainless steel +HS-004 Rose golden stainless steel
<b>Front Wall &amp; Door Header:</b>	Rose golden stainless steel
<b>Flooring angular line:</b>	Rose golden stainless steel
<b>Car Door:</b>	Rose golden stainless steel
<b>Ceiling:</b>	KYT-D101, Mirror stainless steel+Acrylic
<b>Floor:</b>	KYS-S207, PVC
<b>Handrail:</b>	KYH-F101, Mirror stainless steel round handrail



Model : K277



<b>Car Ceiling</b>	PD057, Hairline Finished Stainless Steel
<b>Car Front Wall</b>	Bead Blast Etching
<b>Car Side Wall</b>	Bead Blast Etching
<b>Car Door</b>	Glass With Hairline Finished Stainless Steel Frame
<b>Car Rear Wall</b>	Glass With Hairline Finished Stainless Steel Frame





Model : KYC-H210



<b>Rear Wall:</b>	Champagne gold stainless steel blast + Champagne gold mirror stainless steel
<b>Side Wall:</b>	Champagne gold stainless steel blast + Champagne gold mirror stainless steel
<b>Front Wall &amp; Door Header:</b>	Champagne gold stainless steel blast
<b>Flooring angular line:</b>	Champagne gold stainless steel blast
<b>Car Door:</b>	Champagne gold stainless steel blast
<b>Ceiling:</b>	KYT-D102, Mirror stainless steel+Acrylic
<b>Floor:</b>	KYS-S205, PVC
<b>Handrail:</b>	KYH-F105, Mirror stainless steel flat handrail



Model : K279



<b>Car Ceiling</b>	PD060, Hairline Finished Stainless Steel, Acrylic Lighting, Down Light
<b>Car Front Wall</b>	Hairline Finished Stainless Steel
<b>Car Side Wall</b>	Hairline Finished Stainless Steel+ Mirror Etched Stainless Steel
<b>Car Rear wall</b>	Hairline Finished Stainless Steel+ Mirror Etched Stainless Steel
<b>Car Door</b>	Mirror Finished Stainless Steel





Model : K285



<b>Car Ceiling</b>	Pd060, Titanium Black Mirror Stainless Steel, Acrylic Light
<b>Car Front Wall</b>	Titanium Black Mirror Stainless Steel
<b>Car Side Wall</b>	Titanium Black Mirror Stainless Steel, Titanium Black Mirror Etched Stainless Steel
<b>Car Rear Wall</b>	Titanium Black Mirror Stainless Steel, Titanium Black Mirror Etched Stainless Steel
<b>Car Door</b>	Titanium Black Mirror Etched Stainless Steel



# CEILING DESIGN



**KYT-D101** (Standard configuration)  
Material : Hairline stainless steel +Acrylic



**PS009**  
Painted Steel or Stainless Steel



**KYT-D102** (Standard configuration)  
Material : Hairline stainless steel +Acrylic



**PD057**  
Painted Steel or Stainless Steel  
(Emergency Exit Available)



**KYT-D107**  
Material : Hairline stainless steel+LED down light



**KYT-D110**  
Material : Hairline stainless steel+Acrylic



# CAR FLOOR DESIGN



**FSJ-001**

Resin quartz floor



**FSJ-002**

Resin quartz floor



**FSJ-003**

Resin quartz floor



**FSJ-005**

Resin quartz floor



**FSJ-006**

Resin Quartz Floor



**FSJ-007**

Resin Quartz Floor



**SJ-004**

Resin Quartz Floor



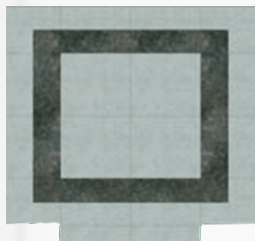
**SJ-024**

Resin Quartz Floor



**SJ-025**

Resin Quartz Floor



**SJ-026**

Resin Quartz Floor



**MA-018**

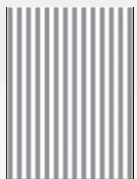
Resin Quartz Floor



**MA-025**

Resin Quartz Floor

# MATERIAL DESIGN



**MSK-001**



**MSK-002**



**MSK-006**



**MSK-007**



**MSK-008**



**MSK-009**



**MSK-010**



**MSK-011**



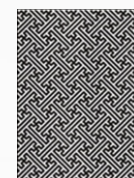
**MSK-012**



**MJM-004**



**MJM-005**



**MJM-006**



**MJM-007**

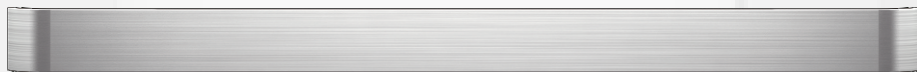
# HANDRAIL DESIGN



**BLT-H005**  
(Mirror Stainless Steel)



**BLT-H007**  
(Mirror Stainless Steel)



**BLT-H009**  
(Hairline Stainless Steel)



**BLT-H012**  
(Mirror Stainless Steel+Sand Blasting Stainless Steel)



**BLT-H113**  
(Mirror Stainless Steel)



**BLT-H112**  
(Painted RAL9003)



**BLT-H120**  
(Hairline Stainless Steel)



# HANDICAP FEATURED COP

Wall Mounted Type



C178G

# WALL MOUNTED TYPE HOP



H208A

Mirror stainless steel finishing is available for this HOP type; Only round button, braille or non-braille type, can be used on the HOP. Duplex model is not available.

# HALL LANTERN

Wall Mounted



HD021



HD018



HD019

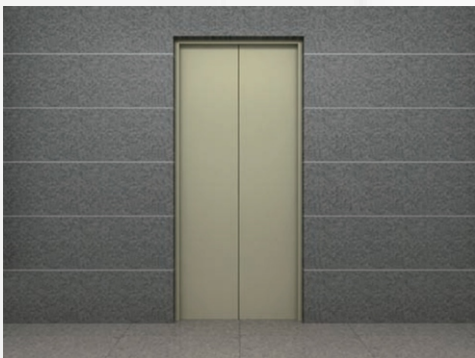


HD010

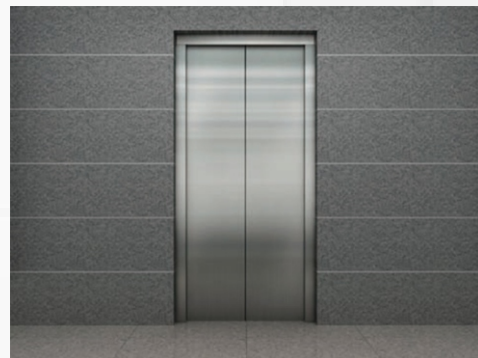


BFK212

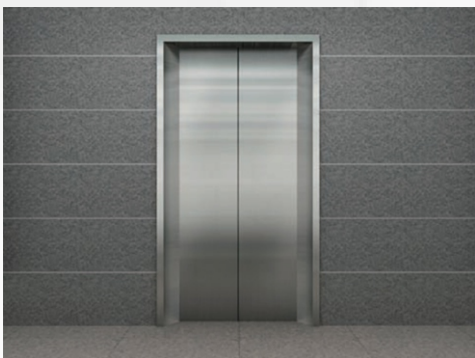
# DOOR JAMB AND LANDING DOOR



Painted Steed/ Stainless Steel  
Narrow Door Jamb



Wide Door Jamb



Big Door Jamb



Framed Glass Door

# COP DESIGN



Separated COP



KYCOP108



KYIND108



KYIND108D



8" True color LCD  
(Customized to 10-inch Size)



KYCOP10  
(Standard configuration)



KYIND20  
(Standard configuration)



Each COP type can be equipped with these 4 types button.





Kanakia Wall Street,  
Chakala, Andheri (E)



Lodha, Palava, Dombivli (E),  
Maharashtra



Indiabulls, Gurgaon



# PASSENGER ELEVATOR (MR)



Alliens Space Station,  
Hyderabad



Marathon Futurex,  
Lower Parel (E), Mumbai



The Signature, Gandhi  
Nagar & Sabarmati Ahmedabad

## High Speed Elevator - 3.0-4.0m/s

Load	Rate Speed	Car Specification (mm)	Hoistway Dimension	Door (Width x Height)
(kg)	(m/s)	Width x Depth x Height	Width x Depth	Width x Depth
1020	3.0-4.0	1600 x 1500 x 2500	2300 x 2400	900 x 2200
1156	3.0-4.0	1800 x 1500 x 2500	2500 x 2400	1000 x 2200
		1800 x 1500 x 2500	2500 x 2400	1100 x 2200
1360	3.0-4.0	1800 x 1700 x 2500	2500 x 2500	1100 x 2200
1632	3.0-4.0	1900 x 1900 x 2500	2600 x 2800	1100 x 2200

# TECHNICAL DATA



Load (kg)	Speed (m/s)	Car Dimension (Width X Depth x Height)	Door Dimension (Width X Height)	Hoistway Dimension (Width x Depth)	Overhead Height	Pit Depth
680	1	1350 x 1300 x 2300	CO 800 x 2100	1900 x 2100	4250	1500
	1.5				4400	1600
	1.75				4600	1800
884	1	1500 x 1400 x 2300	CO 800 x 2100	2100 x 2200	4250	1500
	1.5				4400	1600
	1.75				4600	1800
	2	1500 x 1400 x 2300	CO 800 x 2100	2100 x 2300	4800	2000
	2.5				5000	2500
1020	1	1600 x 1500 x 2300	CO 900 x 2100	2200 x 2300	4250	1500
	1.5	1600 x 1350 x 2300			4400	1600
	1.75				4600	1800
	2	1600 x 1500 x 2300	CO 900 x 2100	2250 x 2300	4800	2000
	2.5				5000	2500
1156	1	1800 x 1500 x 2300	CO 1000 x 2100	2350 x 2350	4250	1500
	1.5				4400	1600
	1.75				4600	1800
	2	1800 x 1500 x 2300	CO 1000 x 2100	2350 x 2350	4800	2000
	2.5				5000	2500
1360	1	1800 x 1700 x 2300	CO 1000 x 2100	2400 x 2500	4250	1500
	1.5				4400	1600
	1.75				4600	1800
	2	1800 x 1700 x 2300	CO 1000 x 2100	2400 x 2500	4800	2000
	2.5				5000	2500
1632	1	1900 x 1900 x 2300	CO 1100 x 2100	2550 x 2700	4250	1500
	1.5				4400	1600
	1.75				4600	1800
	2	1900 x 1900 x 2300	CO 1100 x 2100	2600 x 2750	4800	2000
	2.5				5000	2500





House of Hiranandani Upscale,  
Chennai



Nahar's Amrit Shakti,  
Chandivali, Mumbai



Runwal Greens, Mulund (W),  
Mumbai



# PASSENGER ELEVATOR (MRL)



Seth Midori, Dahisar (E),  
Mumbai



Man Realty, Man Opus,  
Mira Road (E), Mumbai



Marathon, Monte Vista,  
Mulund (W), Mumbai



Pawar Public School,  
Bhandur (W)



Hiranandani Solitaire,  
Hiranandani Estate, Thane (W)



Navin's, Chennai



# TECHNICAL DATA



Load (kg)	Speed (m/s)	Car Dimension (Width X Depth x Height)	Door Dimension (Width X Height)	Hoistway Dimension (Width x Depth)	Overhead Height	Pit Depth
544	1	1200 x 1200 x 2300	CO 800 x 2100	2000 x 1700	4250	1500
	1.5				4400	1600
	1.75				4800	1800
680	1	1350 x 1300 x 2300	CO 800 x 2100	2150 x 1800	4250	1500
	1.5				4400	1600
	1.75				4800	1800
884	2	1350 x 1300 x 2300	CO 800 x 2100	2200 x 1800	5000	2000
	1	1500 x 1400 x 2300	CO 800 x 2100	2300 x 1900	4250	1500
	1.5				4400	1600
	1.75				4800	1800
1020	2	1500 x 1400 x 2300	CO 800 x 2100	2350 x 1900	5000	2000
	1	1500 x 1600 x 2300	CO 900 x 2100	2300 x 2100	4250	1500
	1.5				4400	1600
	1.75				4800	1800
1156	2	1500 x 1600 x 2300	CO 900 x 2100	2350 x 2100	5000	2000
	1	1700 x 1600 x 2300	CO 1000 x 2100	2500 x 2100	4250	1500
	1.5				4400	1600
	1.75				4800	1800
1360	2	1700 x 1600 x 2300	CO 1000 x 2100	2550 x 2100	5000	2000
	1	1700 x 1800 x 2300	CO 1000 x 2100	2600 x 2350	4250	1500
	1.5				4400	1600
	1.75				4800	1800
1564	2	1700 x 1800 x 2300	CO 1000 x 2100	2600 x 2350	5000	2000
	1	1900 x 1800 x 2300	CO 1100 x 2100	2750 x 2300	4250	1500
	1.5				4400	1600
	1.75				4800	1800
	2	1900 x 1800 x 2300		2800 x 2300	5000	2000

# ELECTRICAL CONTROL UNIT SPECIFICATION

## Standard Function

No.	Function Name	Function Description
01	All collective selective control	Under the condition of automatic operation or with attendant, during the running process at the same time of responding the car command signal, it automatically responds up/ down calling press-button signal. Passenger at any floor can register up/ down calling signal to call elevator.
02	Inspection Running	It is operation function used in inspection or debugging. If it accords with running condition press up / down press-button, elevator runs upward / downward at inspection speed. Continuously press the button elevator keeps running. Release the button, it stops right away.
03	Slow self-rescue running	Under the condition of none inspection and not parking at leveling zone, by this time, as long as it accords with starting safety requirements, elevator slowly and automatically runs to leveling zone, open and releases the passengers.
04	Test Running	Function is designed to test or check new elevator. Set certain parameter of integrated machine to test running elevator run automatically. Total time of automatic running and interval per each running go through parameter setting.
05	Clock Control	System gets real-time clock inside. When it records any trouble. it can record specific time of each trouble. In addition, please take this clock as a criterion for certain functions relating to time control.
06	Station-exchange parking	If continuous opening exceeds set time, and opening limit does not act, then elevator closes. After closing, it automatically runs to adjacent floor and opens.
07	Cancel error command	Passenger presses command button, it responds. It then finds out that it does not accord with actual requirements. After commanding register continuously press error command button twice, it cancel sthe registered signal, it can be done through parameter setting.
08	Automatically cancel the command in reversal operation	When elevator arrives at the furthest landing, it is going to make reversal operation. It then cancels all the previous registers.
09	Full-load by-pass	Under fully automatic conditions, during full load usually 80% of loading rating), elevator does not responds any passing calling signal. It only responds the command signal.
10	Home Landing	During fully automatic operation, if it is effective setting of automatic home landing function, and there is no command/ calling in elevator group , after time delay (time can go through parameter setting), it then makes automatic home landing.
11	Automatic stop of Car fan and lighting in waiting	Under fully automatic conditions, without elevator command and outer calling register exceeds 3 minutes (3 min is default value, time can go through parameter adjustment), it then automatically stops car fan and lighting. After it receives any command or calling signal, it is re-electrified. It can be used again.
12	Free setting of service floor	Through land operator, it can freely set any parking landings and none parking landings.
13	Attendant operation	Through toggle switch in operation box, it chooses attendant operation. During attendant operation elevator has no auto-closing function. Elevator closing is executed under the conditions of continuous pressing of closing button by attendant. Meanwhile, it has attendant directional and press-button by pass functions.
14	Independent Running	Independent running means special-purpose running. By this time elevator does not accept any calling register. it dodoes not close automatically, Meanwhile, operation modes are similar to that of attendant operation.
15	Emergency return running in fire disaster	If fire disaster takes place, press "Fire disaster return switch", elevator then immediately cancels all commands and callings. It runs to fire-fighting home landing as soon as possible. It then opens and stops.
16	Automatic correction of floor position signal	During systematic running, every terminal switch action point and each floorleveling switch action point correct the elevators position signal by the position data got during self-tuning.
17	Elevator Locking Service	Under the conditions of fully automatic running or attendant operation , after it presses locking switch, it then cancels all calling registers. It only responds to car command till none is left. It then returns to home landing. After automatic opening, it shuts off car fan and lightening. It truns on opening press-button lamp A After 10 second of time-delay, it stops. After reset of locking switch, it starts normal operation.
18	Over-load protection	When over-load switch acts, it does not close and buzzer rings.
19	Running time limiter	During running process, after it continuously runs the stipulated time made by running time limiter (max 45 seconds), if leveling switch does not act, it stops then.
20	Trouble Protection of reducing switch	If decelerator switch is invalid, elevator makes emergency parking. It prevents it from rushing to top /bottom
21	Limiter to running time	Up / Down terminal installs terminal deceleration switch and terminal limit switch. It ensures that elevator does not exceeds the stroke.
22	Reducing switch trouble protection	After system gets safety loop trouble signal, it makes emergency stop. It prevents from running after it goes wrong.
23	Over-speed protection	It sets protection when speed is out of control and it might lead to safety problem.
24	Leveling switch trouble protection	It takes safety protection in order to prevent leveling switch from going wrong causing any abnormal conditions.
25	Well self-tuning failure diagnosis	As well data is proof of control system in fast running, without correct well data, elevator can not operate normally. Therefore, if well self-tuning does not finish correctly, please set well self-tuning failure diagnosis.

No.	Function Name	Function Description
26	Protection against broken door-lock running	If it detects broken door-lock in running, it stops then.
27	Parallel Running	After it opens forced closing function, it elevator opens continuously without closing signal because of light-curtain action or other reasons, it then makes forced closing and sends our forced closing signal.
28	Forced closing	After it opens forced closing function, it elevator opens continuously without closing signal because of light-curtain action or other reasons, it then makes forced closing and sends out forced closing signal.
29	Home landing opening waiting function	Select the elevator through parameter in home landing, open the door and wait for elevator.

### Optional Function

No.	Function Name	Function Description
01	Opening in advance	After such optional function is selected during leveling process each time, when it arrives at "opening zone in advance", it immediately opens in advance. It thus enhances the elevators running efficiently.
02	Opening re-leveling	If elevator is in high floor, because of wire rope expansion, when passengers enter into/ exit from the car, car moves upwards/ downwards. It leads to incorrect leveling. After system detects it, it opens and makes slow leveling.
03	Fireman Operation	If fire disaster takes place, press "Fireman operation Switch", elevator immediately cancels all commands and callings. It turns to fire fighting home landing. It then enters into fireman operation mode.
04	Group Supervision running	Through group supervision, controller coordinates with various landing calling functions. It thus enhances the running efficiency. It offers peak-hours services, scattered waiting functions etc. System maximumly fulfills group supervision of 8 elevators.
05	Residence (or building) monitor	Through CAN communication line, control system connects with PC machine in monitor room. it can monitor elevator floor position, running direction, trouble conditions etc. in PC machine
06	Earthquake running function	After it matches with Earthquake operation function, if earthquake takes place and earthquake detector acts, it gets a contract signal to input in control system. control system controls the elevator to make nearby parking. It then opens and releases the passengers.
07	Car arrival going	During elevator deceleration leveling process, up/down arrival going rings in car top/ bottom. It reminds the car passenger and waiting ones that it is making leveling. It arrives soon.
08	Hoist-way arrival pre-announcer lamp	After the optional function is selected, hall in each floor installs up/ down arrival pre announcer lamps. It tells the passenger that elevator arrival soon. Meanwhile, it pre-announces the running directions too.
09	Hoist-way arrival gong	After the operational function is selected, hall in each floor installs up/ down arrival gongs. It tells the passengers that it arrives soon.
10	Front-and-after door independent control	Passenger can independently operate front/ rear door as per requirements with respective opening / closing.
11	VIP floor service	Provides VIP passenger with a special function. Therefore VIP passenger can arrival at destination floor as soon as possible.
12	Emergency leveling upon power failure	Because of power failure, running car is not in door zone. It traps the passengers. Power - failure emergency leveling device starts immediately. It drives the elevator to slowly run to door zone. It opens and releases the passengers.
13	Switch control service floor change-over	Converts the elevator service floor through car switch
14	Voice announcer function	When system matches with voice arrival function, during every leveling process, voice announcer reports the arriving floor. Before each closing, announcer will pre-announce the running directions etc.
15	Weighing compensation	Detect car loading data as per weighting device. It gives starting load compensation value. It also improves the cozy start.
16	Opening keeping press-button operation function	Through opening keeping press-button, it offers time-delay closing.
17	Car IC card floor service control	When it matches with such function, car operation box gets a card-reader. Passenger shall take card in order to register the authorised command.
18	Hoist-way IC card calling service control	When it matches with such function, car operation box gets a card reader. Passengers shall take card in order to register the floors calling signal.

Note: Above functional information is not lawful. It is not lawful proof for claim. Users shall be liable and responsible to make sure if the chosen products satisfy the application demands or not. Out of technical progress requirements keep the right to revise any information. As long as catalogue sample-books are issued, it is invalid for previous product manuals.





### **City Lift (India) Ltd. (Head Office)**

11th Floor, Ackruti Star, MIDC Central Rd,  
Chakala Industrial Area (MIDC), Andheri East, Mumbai - 400 093.  
Tel. No. : 022 69020000 - 100 (100 lines)  
Email : [city@citylift.co.in](mailto:city@citylift.co.in) | W : [www.citylift.co.in](http://www.citylift.co.in)

---

#### **Hyderabad**

301 Sai Kiran Apartment,7-1-53/1,  
Dharam Karan Road, Ameerpet,Hyderabad-16  
Email: [city.hyderabad@citylift.co.in](mailto:city.hyderabad@citylift.co.in)

#### **New Delhi**

206/1, 2nd Floor, B-9, Nehru Complex,  
Pandav Nagar, Delhi - 110 092.  
Email: [city.delhi@citylift.co.in](mailto:city.delhi@citylift.co.in)

#### **Chennai**

4/5 2nd Floor, Muthiyal Reddy Nagar,  
Inner Ring Road, Adambakkam,  
Chennai - 600 088.  
Tel. : +91 44 2260 0119  
Email Id.: [city.chennai@cityelevators.in](mailto:city.chennai@cityelevators.in)

#### **Power Project Division**

857, SBI Colony, Tadoba Road,  
Tukum, Chandrapur - 442 401.  
Tel. : +91 71722 55858